

MAVOKO MUNICIPAL INTEGRATED DEVELOPMENT PLAN (IDeP) - (2024 – 2029)

DRAFT REPORT PRESENTATION



CLIENT

JUNE, 2024

**NOMAD LINK
SOLUTION LIMITED**

CONSULTANT



INTRODUCTION

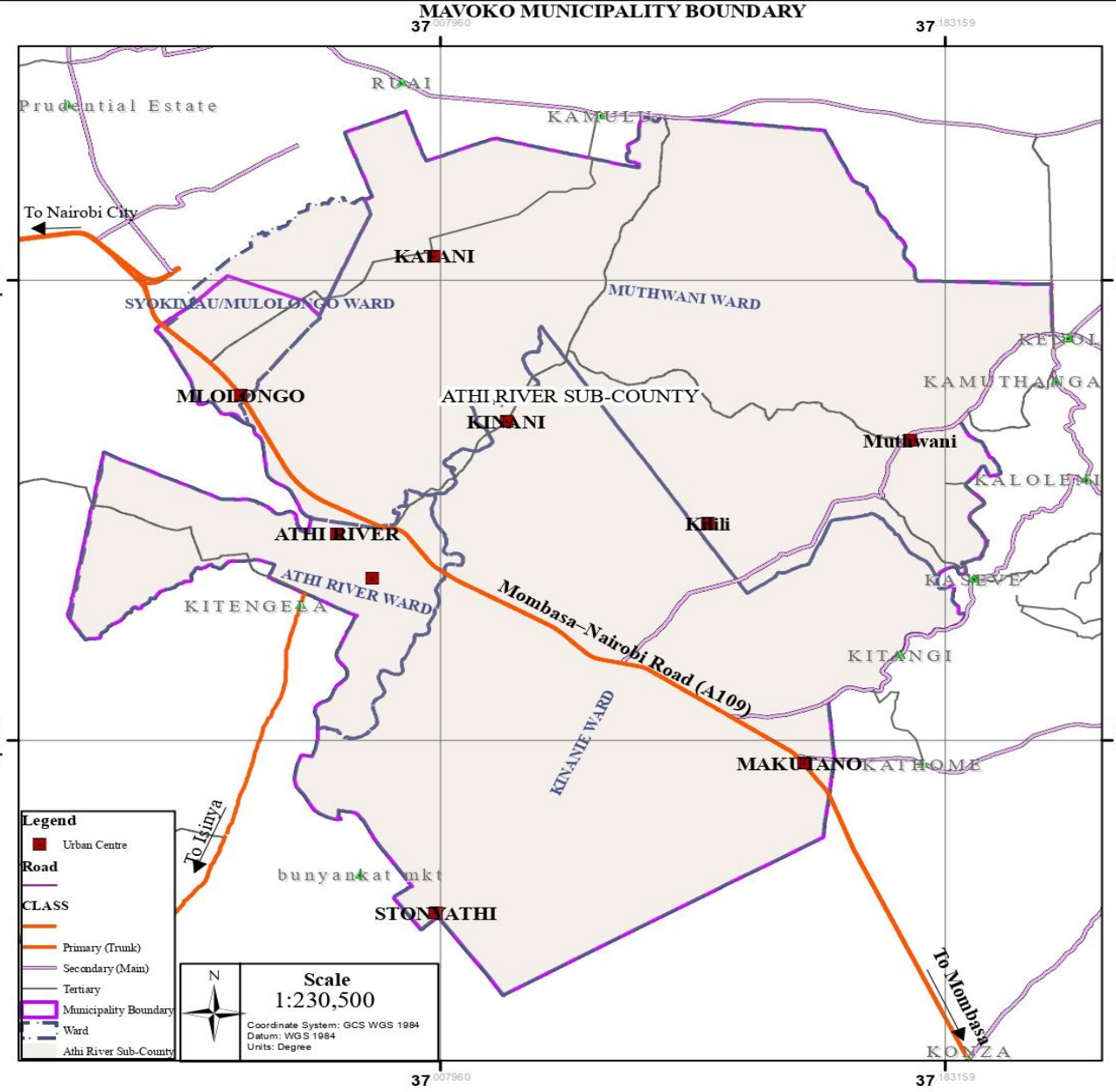
Integrated Development Plan (IDeP) – A 5 Year Plan

Corporate governance instrument that seeks to bring about harmonious development of a municipality by creation of structures, processes and mechanisms that positively impact all spheres of the municipality.

Municipality of Mavoko was established through Mavoko Municipal Charter as approved by the County Assembly and assented to by H.E the Governor of Mavoko County in line with the Urban Areas and Cities Act (UACA) of 2011, amended 2019.



Municipality Boundary




The municipal
charter - assented
by the governor on
27th June, 2018

Covers -
approximately 835
square kilometre



OBJECTIVES OF THE MUNICIPALITY

- (a) Provide for efficient and accountable management of the affairs of the Municipality.
 - (b) Provide for a governance mechanism that will enable the inhabitants of the Municipality to
 - (i) Participate in determining the social services and regulatory framework which will best satisfy their needs and expectations
 - (ii) Verify whether public resources and authority are utilized or exercised, as the case may be, to their satisfaction; and
 - (iii) Enjoy efficiency in service delivery.
 - (c) Vigorously pursue the developmental opportunities which are available in the Municipality and institute measures as are necessary for achieving public order and the provisions of civic amenities, so as to enhance the quality of life of the inhabitants of the Municipality.
 - (d) Provide a high standard of social services in a cost effective manner to the inhabitants of the Municipality.
 - (e) Promote social cohesiveness and a sense of civic duty and responsibility among the inhabitants and stakeholders in the Municipality in order to facilitate collective action and commitment towards achieving the goal of a harmonious and stable community.
 - (f) Make provision of services, laws and other substantive sequences for the Municipality's benefit.
 - (g) Foster the economic, social and environmental well-being of the municipality.
- 

CONSULTANCY OBJECTIVES

Purpose of the IDeP

provide an overall integrated framework for the Municipality's urban growth and basis for coordinated programming of projects and budget.

Specific Objectives

- To define a vision for future growth, management, governance and development.
- To set a base for the proposed new development and role of the Municipality.
- To set regulations, standards and guidelines for development control.
- To provide a basis for provision of modern infrastructural services.
- To formulate measures for environmental conservation/improvements and aesthetics.
- To conduct participatory planning exercises in order to identify citizens' priorities.
- To prepare short- and medium-term plans to guide urban development.
- To prepare a monitoring and evaluation strategy to assist in reviewing and updating the plan in line with the ever-changing trends of the Municipality.



IMPORTANCE OF INTEGRATED DEVELOPMENT PLAN

- a) Effective and coordinated use of scarce resources
- b) Identification of the priority projects
- c) Speeding up of service delivery.
- d) Attraction of development partners and investors.
- e) Strengthening of public participation.
- f) Promoting co-ordination between Municipal, County and National Government.



SCOPE OF WORK

- Development strategies along specified thematic areas of environment, physical and social infrastructure, transportation, housing, local economic development, disaster management and cultural heritage preservation.
- Implementation strategy indicating prioritization of projects and programmes.
- A capital investment plan with associated costs and responsibilities for implementation of agreed sector-wise priorities with a realistic and affordable financing plan budget.
- Resilience and disaster management strategy.
- Undertaking a situation analysis of the municipality and its operations to date.
- Developing/reviewing the vision and mission based on the municipal mandate and functions.
- Designing and facilitating the various elements of the planning process based on the County Government Act and the Urban Areas and Cities Act.
- Securing input from diverse stakeholders including the county government, the county assembly and the board.
- Proposing a strategy for achieving the strategic objectives and key results areas.
- Finalize the integrated development plan and submit to the board for approval.



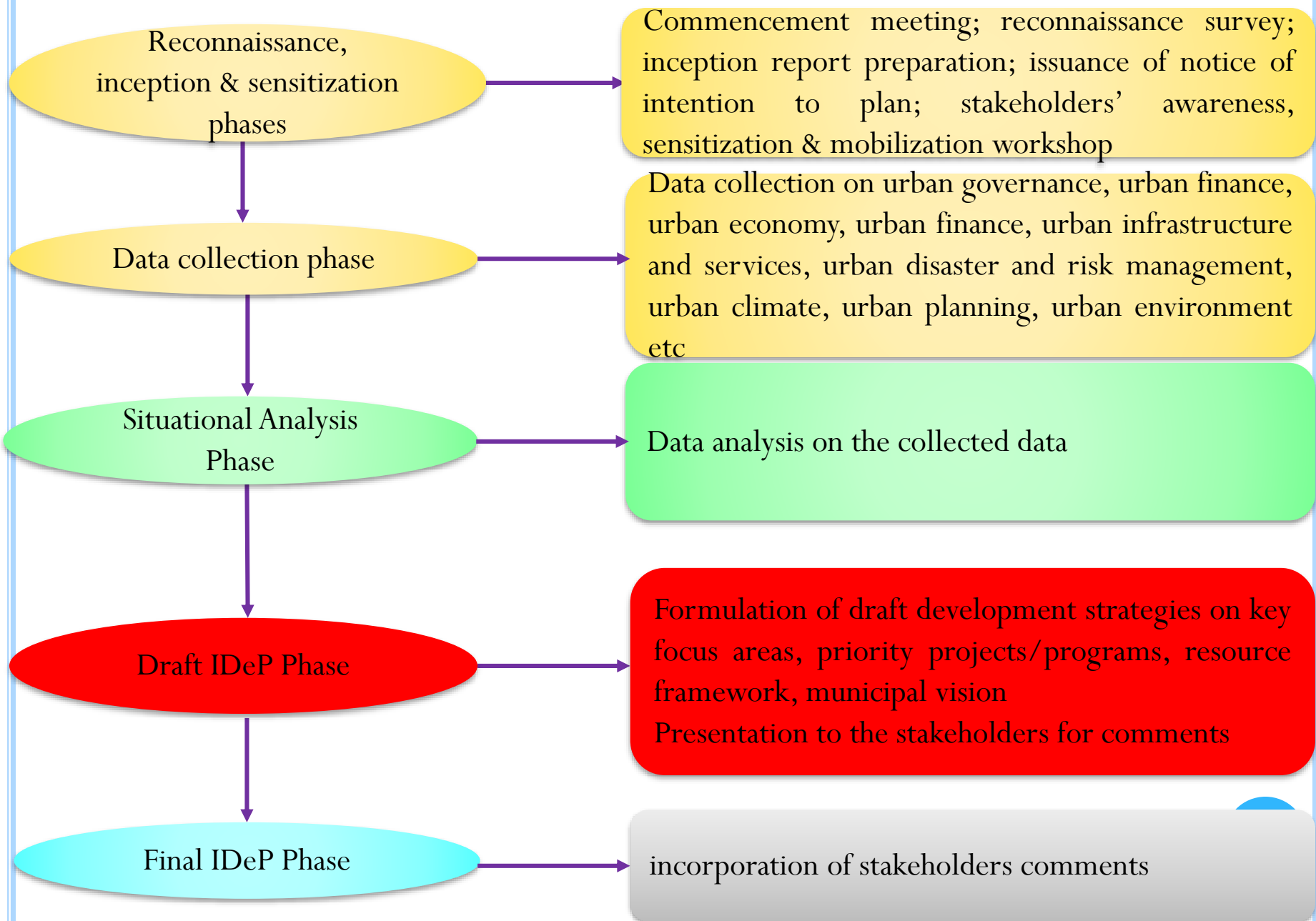
PROJECT OUTPUT AND DELIVERABLES

- Development strategies
- Implementation strategy
- Municipality vision, mission and core values
- Strategies for achieving the strategic objectives and key results areas
- Stakeholders proceedings





METHODOLOGY





POLICY AND LEGAL FRAMEWORK



POLICY AND LEGAL FRAMEWORK

POLICY FRAMEWORK

POLICY	RELEVANCE
Sustainable Development Goals - 2015	❖ SDG No.11 deals with sustainable cities and communities.
Kenya Vision 2030	<ul style="list-style-type: none">❖ Investment in infrastructure❖ Provides for improvement of all economic sectors❖ Emphasizes need to plan urban areas❖ Adequate & decently housed nation

POLICY FRAMEWORK

POLICY	RELEVANCE
National Land Policy (sessional paper No. 3 of 2009)	<ul style="list-style-type: none">❖ Advocates for Sustainable land use❖ Prudent allocation & distribution of land uses❖ Development control❖ Land use planning- tool in land use management
National Spatial Plan 2015 – 2045 (NSP), 2017	<ul style="list-style-type: none">❖ Addresses land use, socio-economic and environmental issues to achieve balanced and sustainable spatial development and optimal land use across the country.

POLICY FRAMEWORK CONT'D

Integrated National Transport Policy 2012	<ul style="list-style-type: none">❖ Identifies challenges besetting the transport sector in Kenya as a whole.
National Land Use Policy, 2017	<ul style="list-style-type: none">❖ Provide legal, administrative, institutional and technological framework for optimal utilization and productivity of land.
National Housing Policy, Sessional Paper No.3 of 2004	<ul style="list-style-type: none">❖ Land use planning – critical in housing provision❖ Lack of comprehensive land use planning – led to substandard settlements

LEGAL FRAMEWORK

Legislation	Relevance
The Constitution of Kenya (2010)	<ul style="list-style-type: none">❖ Article 60 (1)-Equitable and efficient land use❖ Article 66-Regulations on land use
The County Government Act, 2012	<ul style="list-style-type: none">❖ Provides for county planning❖ Section 107 states types of plans: CIDP, county sectoral plan, Integrated Development Plans

LEGAL FRAMEWORK

Legislation	Relevance
Urban Areas and Cities Act, No 13 of 2011, amended 2019	<ul style="list-style-type: none">❖ Section 38 provides for the preparation of Integrated City or Urban areas Development Plan❖ Section 40 states the Contents of an Integrated Urban area Development Plan
The County Government Act, 2012	<ul style="list-style-type: none">❖ Provides for county planning❖ Article 184 of the Constitution of Kenya provides for the governance and management of Urban areas and cities❖ Section 107 states types of plans: CIDP, county sectoral plan, Integrated Development Plans

LEGAL FRAMEWORK CONT'D

Environment Management
and Co-ordination Act, 1999
(amended 2015)

- ❖ Governs management of natural resources & environmental protection

Public Finance Management
Act, 2012

- ❖ Sections 169 to 180 of PFMA provides for the processes of financial management, financing and reporting in Urban Areas and Cities

LEGAL FRAMEWORK CONT'D

Water Act, 2002

- ❖ It provides for the management, conservation, use and control of water resources and for the acquisition and regulation of rights to use water

The National Urban
Development Policy (NUDP)
(Sessional Paper, 16, 2016)

- ❖ Seeks to create a framework for sustainable urban development

COUNTY POLICY AND LEGAL FRAMEWORKS

Policy and Legal Frameworks

- Mavoko Municipality Integrated Development Plan 2018- 2022
- Machakos County Management of Quarrying Activities Act, 2016
- Machakos County Public Market and Stalls Act,2016
- Machakos County Non-Motorized Vehicles Act,2016
- Machakos County Persons with Disabilities Act,2016
- Machakos County Government Administrative Structures Act,2015
- Machakos County Designated Parking Places Act,2015
- Machakos County Revenue Administration Act ,2015
- Machakos County Co-operatives Societies Act,2015
- County Intergrated Development Plan (2023-2027)

Policy and Legal Frameworks

- Machakos County E-Waste Management Act,2015
- Machakos County HIV and AIDS Management Act 2015
- Machakos Ward Development Fund (Amendment)Act,2015
- Machakos County Water and Sanitation Act,2014
- Machakos County Sand Harvesting Act, 2014
- Machakos County Ward Development Fund Act, 2014
- Machakos County Trade License Act, 2014
- Machakos County Agricultural Development Fund Act, 2014
- Machakos County Liquor Licensing Act, 2014
- Machakos County Public Participation Act,2014





STAKEHOLDER ENGAGEMENT

STAKEHOLDERS AWARENESS AND VISIONING WORKSHOP

❖ Held on 19th march, 2024 at Mavoko Municipal chambers



STAKEHOLDERS AWARENESS AND VISIONING WORKSHOP

Stakeholders engagement outcome

- Establishing an efficient transportation network.
- Implementing effective waste management practices.
- Creating an aesthetically pleasing municipality.
- Promoting industrial development within the municipality.
- Ensuring a consistent and adequate water supply.
- Enhancing agricultural productivity.
- Establishing adequate market facilities.
- Promoting environmental sustainability initiatives.
- Installing streetlights and floodlights for enhanced safety.
- Implementing proper drainage channels for flood prevention and management.

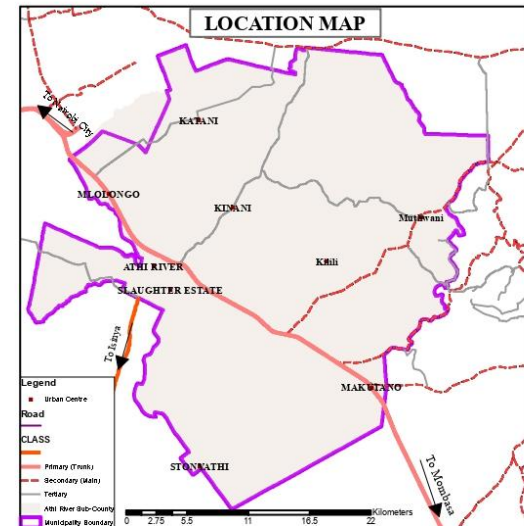
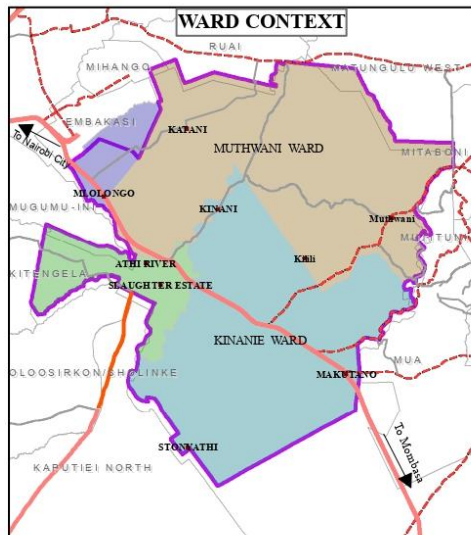
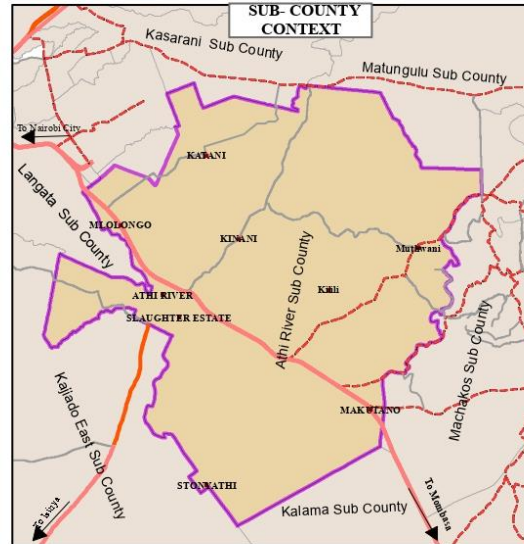
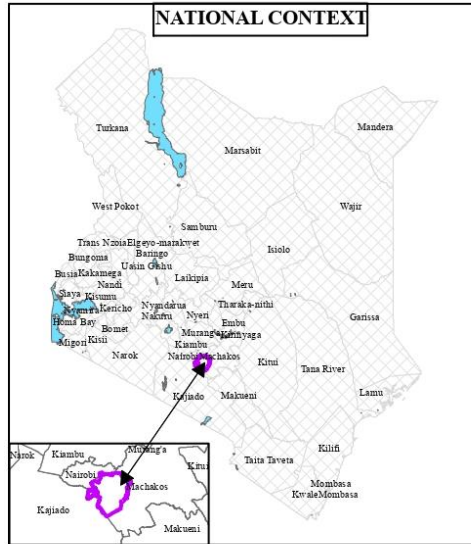




EXISTING SITUATION

LOCATION

MAVOKO MUNICIPALITY LOCATION CONTEXT

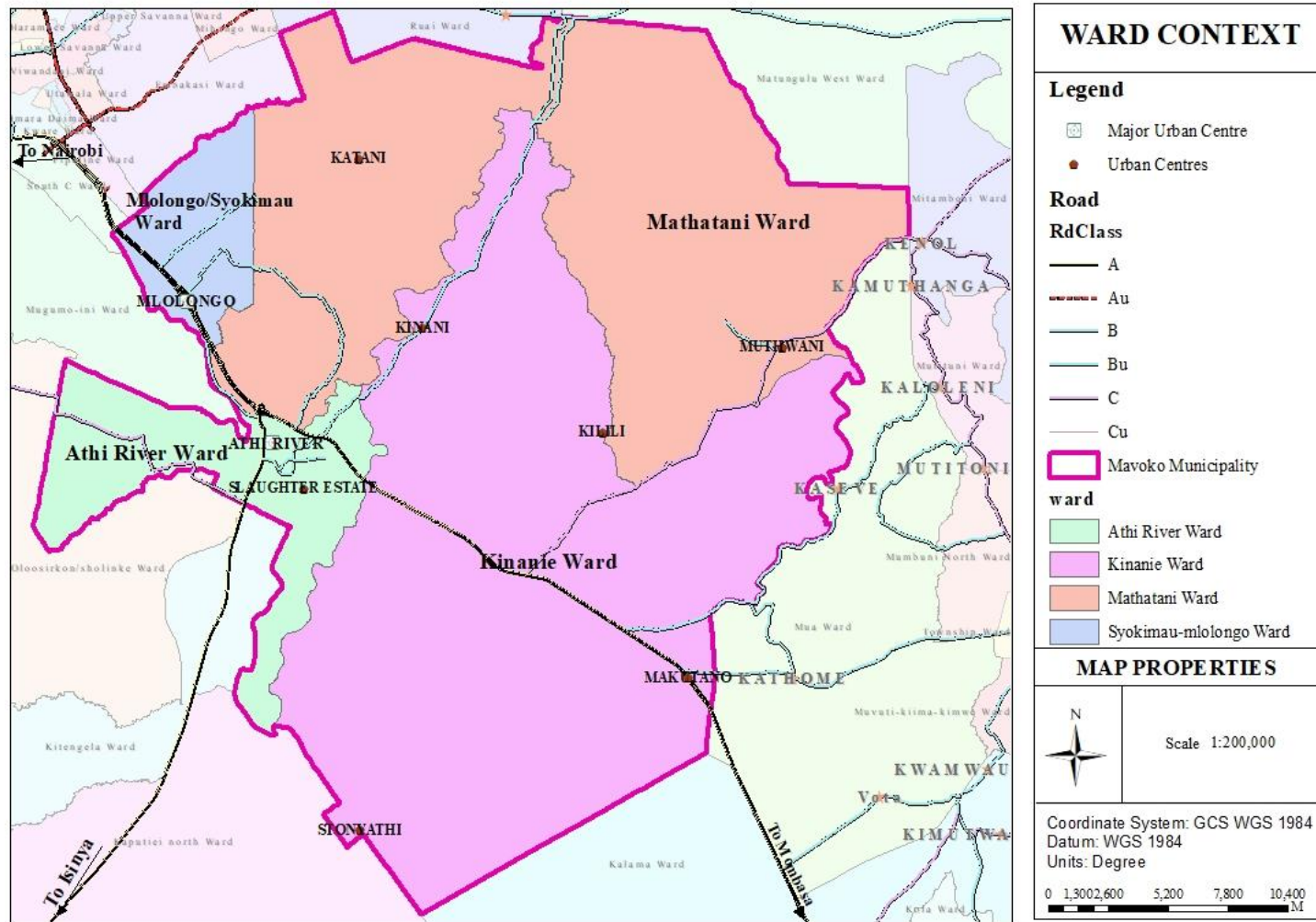


Lies within the Athi Catchment Basin a

Covers - 835 square kilometers

Covers; entire of Athi river sub-county

ADMINISTRATIVE UNITS – WARDS



- 4 wards –
- Syokimau/Mlolongo
 - Kinanie
 - Athi River
 - Syokimau
 - Muthwani

ENVIRONMENTAL OF MUNICIPALITY

Climate

Average Annual rainfall - 712.89 mm

Temperatures range from 18 to 29 degrees Celsius throughout the year

Impact of climate change

- Food shortage
- Increased food prices
- Scarcity of water
- Drought and flooding



ENVIRONMENT

□ Agro-ecological zones

Situated:

- ✓ Lower Highland (LH) -LH3 & LH4
- ✓ Upper Midland (UM) -UM4, UM5, UM5-6 & UM6



ENVIRONMENT

☐ Agro-ecological zones

Agro-Ecological Zone	AEZ Code	Major Crop	Rainfall Range (mm)	Areas
Lower Highland	LH 3	Wheat/Maize Barley Zone	600 - 1200	Small section of kinanie ward near kaseve
Lower Highland	LH 4	Cattle - Sheep Barley/Sunflower - Maize Zone	600 - 1200	Covers a small section of kinanie ward
Upper Midland	UM 3	Marginal Coffee Zone	500 - 1000	Covers a small section of Kinanie ward on the eastern part
Upper Midland	UM 4	Maize - Sunflower Zone	400 - 900	A small section of the eastern part of Muthwani & makutano area in kinanie and mathatani ward on the eastern part

ENVIRONMENT

☐ Agro-ecological zones

Agro-Ecological Zone	AEZ Code	Major Crop	Rainfall Range (mm)	Areas
Upper Midland	UM 5	Livestock - Sorghum Zone	400 - 900	Muthwani & makutano area in kinanie and mathatani ward
Upper Midland	UM 5 - 6	Livestock - Sorghum/Ranching Zone	400 - 900	Covers cetral section of mathatani and kinanie ward. Specifically on areas around kilili
Upper Midland	UM 6	Ranching Zone	400 - 900	Covers sections of kinanie, Athi river and mathatani wards. Athi river, Kinani and stonyathi are some of the areas within the zone

ENVIRONMENT

Physiography

Drained by Athi River and Mto wa Mawe rivers

Other rivers:

- Kilome
- Kithundini
- Kilaani
- Kyumbi
- Kyamutheke
- Kitanga **etc**

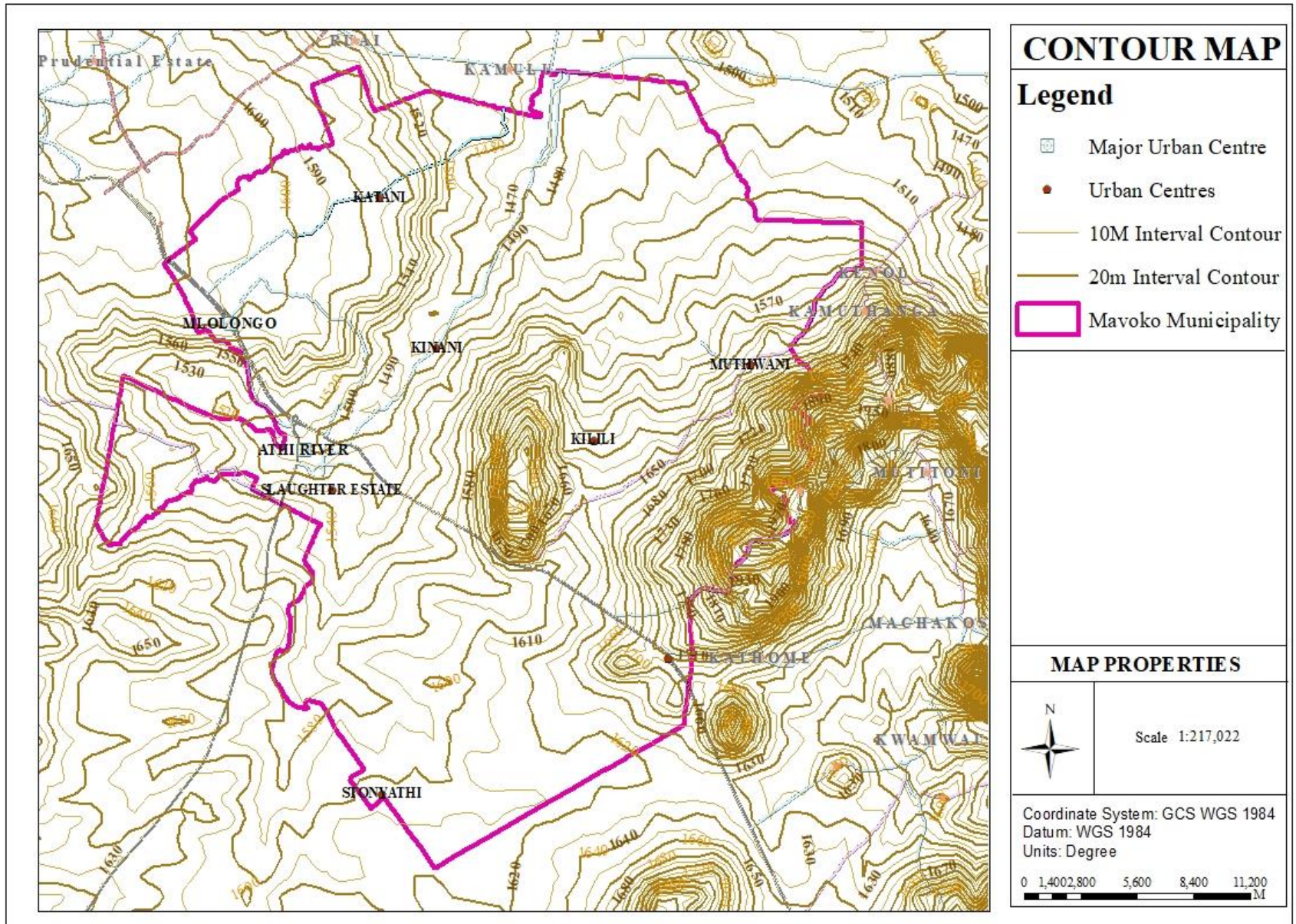
Natural features -hills & Vegetation



ENVIRONMENT

Topography

Highest point - 1890 meters , lowest - 1480 ms



ENVIRONMENT

Soil characteristics

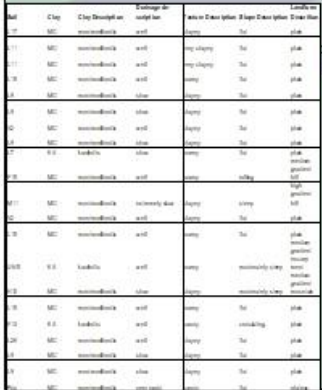
Soil Type	Clay Description	Drainage Descripti on	Texture Description	Slope Description	Land Form Description
L15	montmorillonitic	well	loamy	flat	plain
Uh15	kaolinitic	well	loamy	moderately steep	medium-gradient escarpment
H13	montmorillonitic	slow	clayey	moderately steep	medium-gradient mountain
L15	montmorillonitic	well	loamy	flat	plain
F13	kaolinitic	well	sandy	undulating	plain
L26	montmorillonitic	well	clayey	flat	plain
L9	montmorillonitic	slow	clayey	flat	plain
L9	montmorillonitic	slow	clayey	flat	plain
Pdo	montmorillonitic	very rapid	sandy	flat	plateau

ENVIRONMENT




Soil characteristics

Soil Type	Clay Description	Drainage Descripti on	Texture Description	Slope Description	Land Form Description
L15	montmorillonitic	well	loamy	flat	plain
Uh15	kaolinitic	well	loamy	moderately steep	medium-gradient escarpment
H13	montmorillonitic	slow	clayey	moderately steep	medium-gradient mountain
L15	montmorillonitic	well	loamy	flat	plain
F13	kaolinitic	well	sandy	undulating	plain
L26	montmorillonitic	well	clayey	flat	plain
L9	montmorillonitic	slow	clayey	flat	plain
L9	montmorillonitic	slow	clayey	flat	plain
Pdo	montmorillonitic	very rapid	sandy	flat	plateau

Soil characteristics



Legend

-  Major Urban Centre
 Urban Centres
 Ward Boundary

SOIL

- F13
 F15
 H13
 L11
 L15
 L17
 L26
 L7
 L9
 M11
 Pdo
 Uh15
 V2
 Mavoko Municipality

MAP PROPERTIES



Scale 1:217,044

Coordinate System: GCS WGS 1984
Datum: WGS 1984
Units: Degree



ENVIRONMENT

Environmental Degradation

- Deforestation due to high fuelwood demand
- Water pollution from industrial waste
- Poor waste management
- Soil erosion from unsustainable land use
- Sand over-extraction leading to water depletion and erosion
- Riparian reserve encroachment
- Air pollution from industrial and vehicular emissions



ENVIRONMENT

Emerging issues

- Air pollution
- Loss of vegetation cover and deforestation
- Increased soil erosion
- Encroachment of riparian reserve
- Over exploitation of sand mining
- Climate Change and Unpredictable Weather Patterns



POPULATION AND DEMOGRAPHIC CHARACTERISTICS

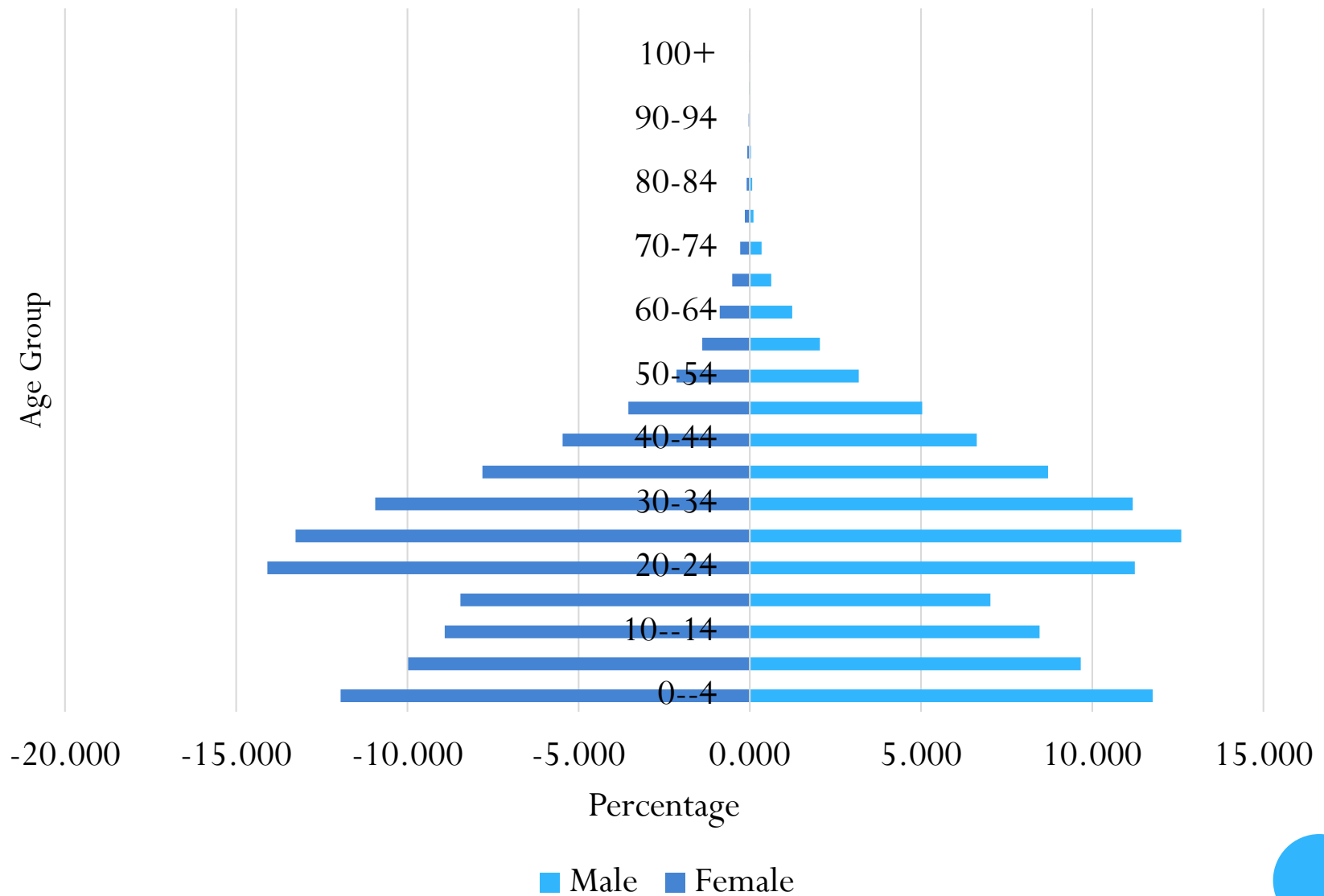
- ❖ The population growth rate of the entire County is estimated to be 2.2%.
- ❖ **Population projection**

	Male	Female	Total	2024			2029		
	Male	Female	Total	Male	Female	Total	Male	Female	Total
County population	710,707	711,191	1,421,932	793347	793887	1587271	885595	886198	1771836
Municipality population	164,322	158 172	322 499	183429	176564	359993	204758	197094	401852

DEMOGRAPHIC CHARACTERISTICS

	Percentage
Under 5 years	11.85%
Pre-primary School Age (3 – 5 years)	6.53%
Primary School Age (6 – 13 years)	14.92%
Secondary School Age (13 – 19 years)	9.25%
Youth Age Group (15 – 34 years):	44.35%
Reproductive Age Group (15 – 49 years):	31.18%
The labour force (18-64 years):	71.75%
Aged population (65 and above years):	1.2 %

POPULATION STRUCTURE



URBANIZATION SPATIAL TRENDS

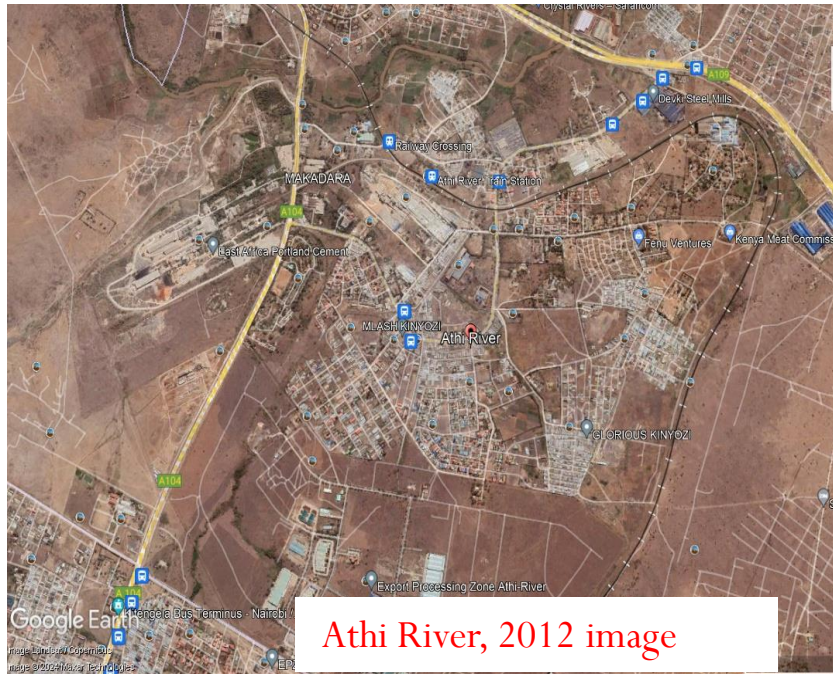
- ❖ . Mavoko municipality - high rate of urbanization

Commercial nodes

- Athi River
- Mlolongo
- Syokimau.



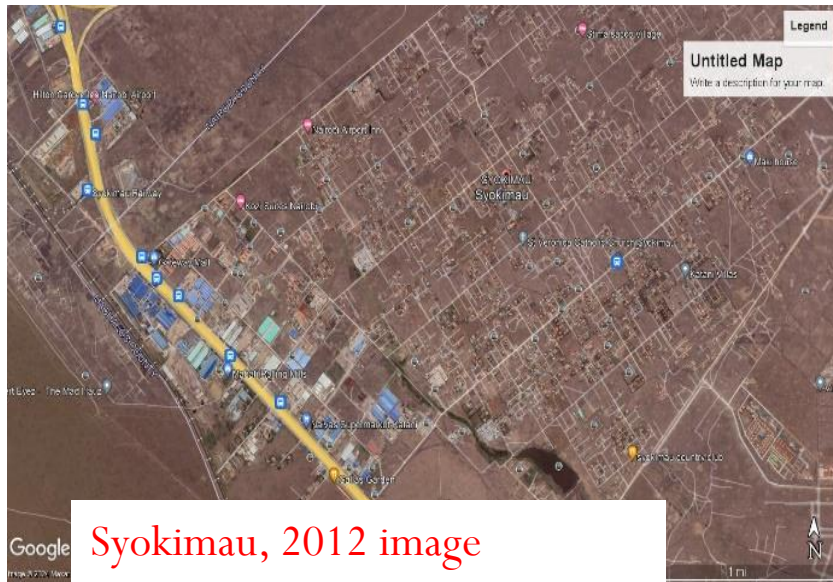
URBANIZATION SPATIAL TRENDS



Athi River, 2012 image



Athi River, 2024 image



Syokimau, 2012 image



Syokimau, 2024 image

URBANIZATION SPATIAL TRENDS

The rate of urbanization is attributed to the.

- ❖ Its strategic location in close proximity to the Nairobi City Capital
- ❖ Industrial hub in the country containing various types of industry
- ❖ Mombasa–Nairobi Standard Gauge Railway (SGR) located in Syokimau
- ❖ The sub-county headquarter and host various national and sub-county offices
- ❖ Availability of institutions such as Daystar University
- ❖ Its strategic location along the Nairobi-Mombasa Highway (A109).



URBAN ECONOMY

i. Manufacturing sector - main economic activity

❖ Host several industries such as:

- ✓ Savannah Cement
- ✓ Portland Cement
- ✓ Bamburi Cement
- ✓ Mombasa Cement
- ✓ Export Processing Zone (EPZ)
- ✓ Devki Steel Mills etc



URBAN ECONOMY

❖ **Manufacturing sector** - main economic activity

Challenges facing industries

- ✓ Inadequate infrastructure such as roads, electricity, and water supply
- ✓ Inadequate technical staff
- ✓ Reduced demand for goods due to inflation
- ✓ Limited market access
- ✓ Cost of Doing Business - High operating costs



URBAN ECONOMY

ii. Agriculture - second most important sector in the economy

- ❖ Crop Farming
- ❖ Major food crops grown - maize, beans, cow peas, pigeon peas, and cassava
- ❖ Main cash crops - coffee, sorghum, mangoes and pineapples

Livestock farming - Livestock ranching is the main agriculture activity in the municipality

Common types of livestock:

- Cattle (for beef and dairy)
- Shoats
- A few donkeys and pigs.
- Chicken (mostly local chicken),



URBAN ECONOMY

iii. Challenges facing agriculture

- ✓ Limited Access to Inputs
- ✓ Inadequate Irrigation Infrastructure
- ✓ Pests and Diseases
- ✓ Limited Access to Markets
- ✓ Climate Change and Environmental Degradation



URBAN ECONOMY

iii. Commercial activities

Formal commercial activities:

Concentrated - Athi River, Mlolongo, Syokimau and other central areas

a. Formal commercial activities



URBAN ECONOMY

iii. Commercial activities

Markets

- ✓ Athi River
- ✓ Mlolongo
- ✓ Makutano (Chumvi)

Both the **Mlolongo** and **Makutano (Chumvi)** open-air markets:

- ✓ Lack proper infrastructure,
- ✓ Lack of sheds
- ✓ Poor drainage channels
- ✓ Absence of sanitation blocks
- ✓ Unpaved surfaces



URBAN ECONOMY

iii. Commercial activities

Markets

Athi River closed market

- ✓ Insufficient sheds
- ✓ Congestion issues
- ✓ Inadequate drainage channels



Athi river retail market located in athi river

central area



URBAN ECONOMY

iii. Commercial activities

b. Informal business activities (jua kali)

Artisans - small scale artisanal miners, welding, motor garages, furniture making, car wash activities, branding and wall painting, household items and tools, tailoring

Hawking activities



*Informal commercial activities
at Athi river*



URBAN ECONOMY

iii. Commercial activities

Emerging issues

- ✓ Inadequate market in the municipality
- ✓ Lack of Appropriate Market Infrastructure
- ✓ Lack of a Light Industrial Park

iv. Mining and natural resources

- ✓ Ballast
- ✓ Sand
- ✓ Quarry Sites

v. Tourism Sector

- ✓ Swara acacia
- ✓ Lukenya hills
- ✓ kapiti plains



URBAN INFRASTRUCTURE AND SERVICES

Road Infrastructure - Road is the main mode of transport in Municipality of Mavoko.

Road Surface Classification and Condition

Approximately:

50.15% - earth condition

35.65% - gravel roads.

14.20% - bitumen status.

Road [Classified Road in the Municipality and their Status](#)

[Hyperlink](#)

ROAD SURFACE CONDITION



Poor road condition of roads in Mlolongo central area



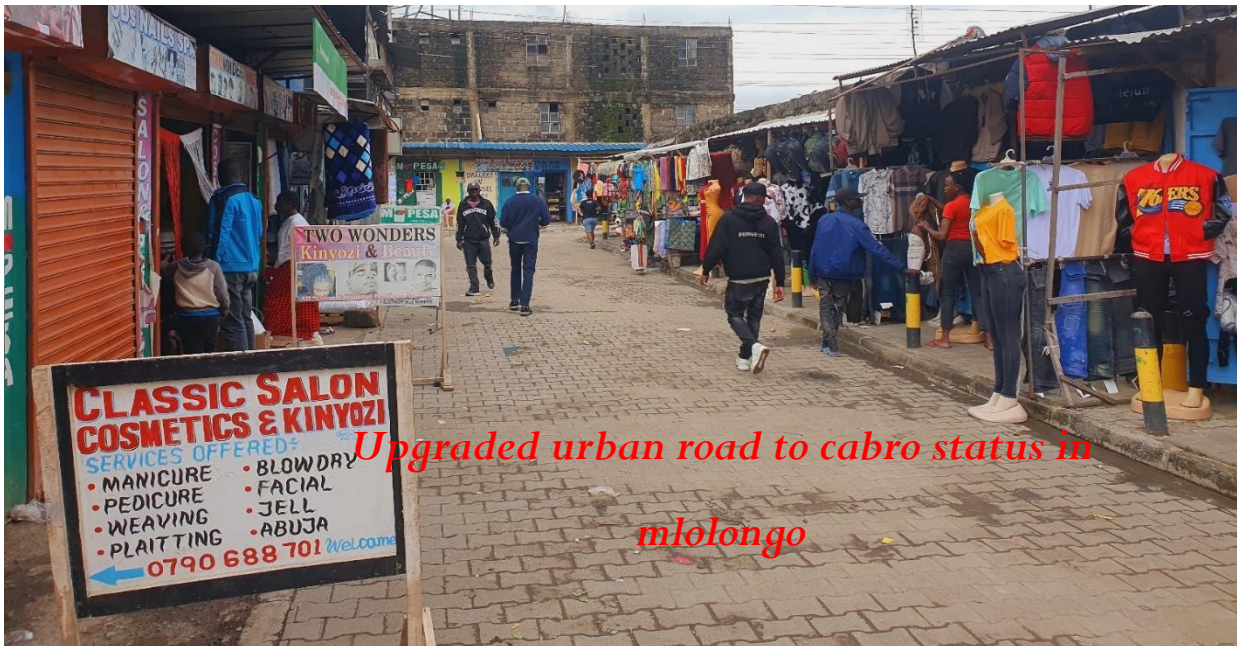
Poor road condition in Athi River



ROAD SURFACE CONDITION



Some of the upgraded roads within Athir River



*Upgraded urban road to cabro status in
mlolongo*



URBAN INFRASTRUCTURE AND SERVICES

Security and Street Lighting Infrastructure

- Major municipality commercial nodes have floodlights and streetlights such as in Athi River and Mavoko - not adequate.
- Central areas - lack adequate security lighting



URBAN INFRASTRUCTURE AND SERVICES

Bus Terminus

- ✓ Three bus stops in Mlolongo, Devic and Shell where matatus drop off and pick up passengers
- ✓ Lacks a designated bus terminus

Parking Lots

- ✓ Parked in frontage of commercial buildings reducing road spaces
- ✓ Lack a designated parking lot



URBAN INFRASTRUCTURE AND SERVICES

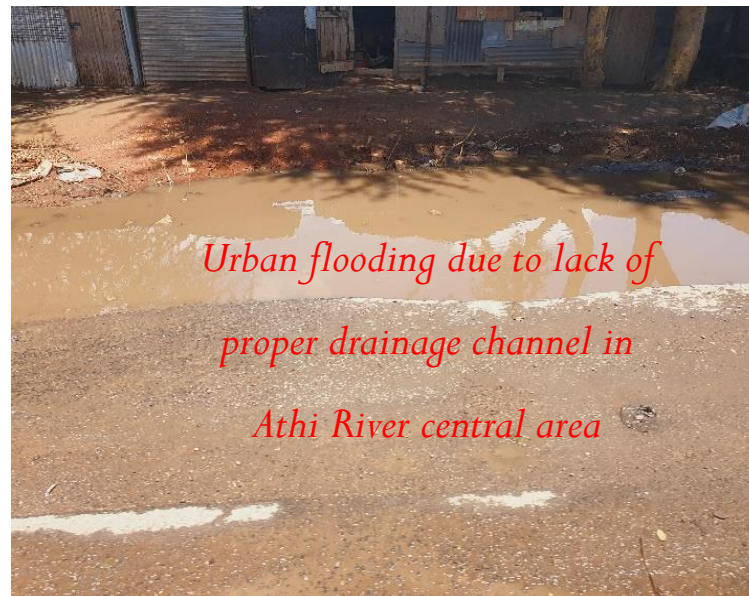
Storm Water Drainage



*Clogged open drainage channel
in Mlolongo Central area*



*Urban flooding caused by lack of
drainage channel in Mlolongo
Central area*



*Urban flooding due to lack of
proper drainage channel in
Athi River central area*



URBAN INFRASTRUCTURE AND SERVICES

Rail Transport

- ✓ Standard gauge railway and station within the municipality

Emerging issues

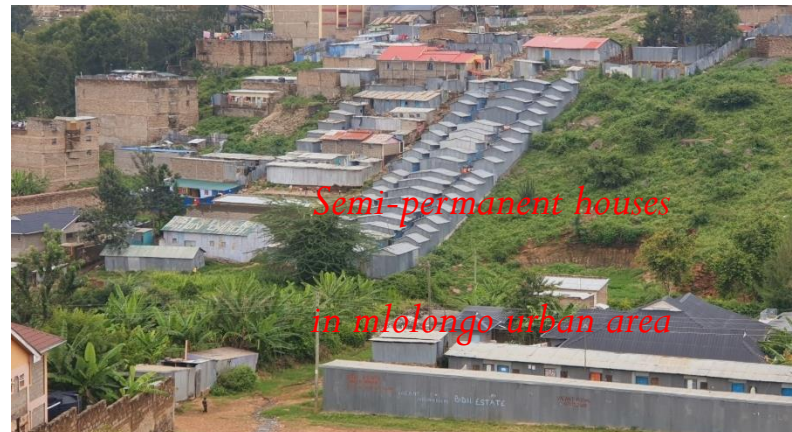
- ✓ Lack of designated bus terminus and parking lots
- ✓ Insufficient high mast floodlights in Mavoko Town, Mlolongo and other central areas.
- ✓ Inadequate storm water drainage channels.
- ✓ Clogging of some storm water drainage channels.
- ✓ High %age earth roads.
- ✓ Encroachment of some road reserve in the urban core.
- ✓ Inadequate pedestrian walkways in major urban Centre.
- ✓ Lack of road connectivity.
- ✓ Narrowness of some access roads.



Urban Housing

Housing typologies - vary from bungalows to flats, permanent to semi-permanent and temporary structures.

Urban areas - flats, bungalow and maisonnettes



Informal Settlements

Emergence of slums in the municipality - in Athi River and Mlolongo central areas.

Evidenced by the:

- ✓ Poor quality of housing
- ✓ lack of appropriate urban infrastructure
- ✓ Tenure insecurity



Municipal services

Water Supply -The main sources of water within the municipality are boreholes & dams and surface water (rivers).

Mavoko Water and Sewerage Company connect some of the residents to piped water.

Mavoko Water and Sewerage

The municipality has 210 boreholes

Most residents **lack access to piped** water and clean water. This is evidenced by the high number of water vendors in the central areas of the municipality



Water Vendors within the
Athi River central area



Municipal services

Emerging issues

- ✓ Inadequate water supply.
- ✓ Increase in water demand due to increase in population.
- ✓ Inadequate water for agriculture.



SANITATION

Liquid Waste Disposal -municipality has a conventional sewerage system
- **Mavoko Water and Sewerage Company**

Only less than 20% of the municipality residents are served by the sewer system. The main methods of liquid waste disposal are:

- ✓ Pit latrines
- ✓ VIP latrines
- ✓ Flush toilets.

.



SANITATION

Solid Waste Management -The municipality does not have a proper waste management system.

There are skips within major urban nodes such as Mlolongo and Athi River:

Skips in major urban centres :

- Inadequate and often filled beyond capacity leading to waste spillage and environmental pollution, detracting from the area's aesthetic appeal



SANITATION

Solid Waste Management



SANITATION

Emerging Issues

- ✓ Inadequate sewer reticulation system
- ✓ Improper solid waste management.
- ✓ Lack of designated waste collection sites.
- ✓ Un- improved sanitation facilities.



ENERGY

The municipality common types of energy sources:

Electricity – main source for lighting

Others sources of lighting

- Solar energy
- Charcoal
- firewood

Main Energy for Cooking

- Firewood
- Charcoal



SOCIAL INFRASTRUCTURE								
Number of Public Schools and Teachers								
	Mavoko Municipality							
Ward	ECDE		Primary		Junior secondary		Senior school	
	No. of ECDE	No. of teachers	No. of schools	No. of teachers	No. of schools	No. of teachers	No. of schools	No. of teachers
Mlolongo,	18	74	11	81	11	81	2	16
Kinanie	8	22	7	39	7	39	9	
Athi River	17	80	15	97	15	97	11	61
Muthwani	12	65	8	39	8	39	7	

SOCIAL INFRASTRUCTURE

Tertiary Educational facilities

Name	Ward	Courses offered
Technology development program	Mlolongo,	Vocational training
Tourism institute of Kenya		Tourism
Rural aid Kenya training institute	Kinanie	Community development 9
Daystar university	Athi River	Undergraduate programs Postgraduate program
Athi river Technical Training institute		Technical Training
Lukenya university		Undergraduate Post graduate
Learnexx training college		Computer studies
Sunrise teachers college		Teaching
Brilliant Beauty college		Hairdressing

SOCIAL INFRASTRUCTURE

Public health Facilities within the Municipality

S.No	Name of the health facility	Type	Ward
1.	Athi River level 4 hospital	Level IV	Athi river
2	Athi river community hospital	Level III	Athi river
3	Gk prison dispensary	Level II	Athi river
4	Katani Dispensary	Level II	Athi river
5	Kinanie Dispensary	Level II	Kinanie
6	KMC Staff Clinic	Level II	Mavoko
7	Mlolongo Health Centre	Level III	Mlolongo
8	Mlolongo Wellness Centre	Level II	Mlolongo
9	Kyumbi dispensary	Level II	Athi river

SOCIAL INFRASTRUCTURE

Emerging Issues

Educational facilities

- Inadequate ECDE facilities
- Inadequate technical training institute
- Lack of PWD institute

Health facilities

- Inadequate health centres in the municipality



COMMUNITY FACILITIES

Police Stations / Posts/courts

Administrative Offices

There are two social hall in the municipality:

- Athi river social hall – the social hall is dilapidated and lacks the appropriate infrastructure
- Makadara social hall –this is under construction

Mavoko stadium – there is a proposed stadium which has not been constructed



COMMUNITY FACILITIES

Emerging issues

- Lack of recreational facilities
- Inadequate health facilities
- Inadequate of social halls



EXISTING MUNICIPAL INSTITUTION FRAMEWORK

Existing municipal board formed as per the urban areas and cities act, 2011
(amended, 2019)

Emerging issues

- Municipal is created.
- Municipal board members are appointed.
- Municipal manager is appointed.
- Lack of adequate staff.
- Lack of functional and organizational structure.
- Lack of standard operating procedure.
- Lack of performance management system.



MUNICIPAL FINANCE

- The Municipality of Mavoko main source of revenue is allocation from County Government of Machakos and the development partners like Kenya Urban Support Programme, (KUSP).
- Currently, the revenue is collected by the County Government of Machakos as the municipality functions are yet to be transferred to the Municipal Board.



MUNICIPAL FINANCE

Emerging Issues

- ✓ Major source of revenue is the condition grant from Kenya Urban Support Programme, (KUSP).
- ✓ There is no share from the county general fund to the municipality.
- ✓ Municipality should be delegated the functions of collections of revenue generated within the municipality.
- ✓ The County Government should allow plough back of all revenue generated in the municipality to activities related to governance and management of the municipality.
- ✓ Municipality to explore other sources of revenue including from local and external sources.





DEVELOPMENT STRATEGIES AND IMPLEMENTATION FRAMEWORK

FOCUS AREAS

1. Municipal Governance and Management.

Area	Strategies
Staff of Board of Municipality of Mavoko	<ul style="list-style-type: none">■ Board of Municipality should recruit its own staff■ The Board should also introduce performance management system for all staff continuously develop and motivate its staff.
Training of Board and Staff.	<ul style="list-style-type: none">■ Engage/ hire consultant to train the Board and staff.■ Conduct induction courses, one for Board and one for staff.■ Roll out bi-annual refresher training for Board and Staff.■ Sponsor staff for training in local and foreign institutions for specialized skills
Development of staffing norms for Board	<ul style="list-style-type: none">■ Formulation of scheme of service for staff of the Board;■ Formulation of organizational structure for the Board■ Development of code of conduct for staff of the Board;■ Development of service charter for the Board; and,■ Development of performance management system for the Board.

FOCUS AREAS

1. Municipal Governance and Management.

Area	Strategies
Exercise of Power, Authority and Execution of Functions by the Municipal Board.	<ul style="list-style-type: none">■ Develop a function structure for delivery of all transferred functions, power and authority.■ Formulate framework of engagement with all stakeholders of the Board.■ Formulate framework for reporting of performance of the Board to stakeholders
Decentralization of Power, Authority and Functions	Prepare a decentralization structure for the Board and for units below the Board. Seek approval of County Assembly, through the County Executive, for the new established units of delivery of functions and exercise of power and authority.



FOCUS AREAS

1. Municipal Governance and Management.

Area	Strategies
Structured Engagement with Private Sector	<ul style="list-style-type: none"><li data-bbox="537 254 1883 539">■ Should recommend development of policies and laws that mainstream private sector in the governance and management of the Municipality of Mavoko to the County executive.<li data-bbox="537 561 1883 846">■ Undertake an assessment of the functions that can be delivered more effectively by the private sector and enter into mutual benefit arrangement with private sector for better service delivery.<li data-bbox="537 868 1883 1153">■ Formulate and recommend to the executive and the County Assembly, through a resolution of the Board, an incentive to attract private sector investments in the municipality

FOCUS AREAS

1. Municipal Governance and Management.

Area	Strategies
Adoption of Information Communication Technology in Governance and Management of Municipality of Mavoko	<ul style="list-style-type: none">▪ Roll out structured adoptions of ICT in all areas of operations of the Board of Municipality of Mavoko.
Inter-linkages for the Municipality Board of Mavoko	<ul style="list-style-type: none">▪ Roll out a structure of inter-linkages, both local and international.▪ Have the inter-linkages incorporated in the Board and county planning and budgetary cycles.



FOCUS AREAS

2. The Economy of Municipality of Maoko
3. Municipal Finances
4. Management of Land
5. Land Use Plan for municipality
6. Municipal Infrastructure and Services Strategies
7. Municipal Environment
8. Social Welfare and Marginalized Groups



FOCUS AREAS

9. Municipality Disaster and Risk Management
10. Municipal Agriculture
11. Formulation of Policies.

DEVELOPMENT STRATEGIES AND IMPLEMENTATION
FRAMEWORK





MUNICIPALITY STRATEGIC DIRECTION

STRATEGIC DIRECTION

Municipality Vision Statement

A Municipality with high quality life to all citizens in a clean and secure environment.

Municipality Mission

Provide high quality, cost-effective services, ensure safety and cleanliness, and foster inclusive prosperity through strategic planning and citizen involvement.



STRATEGIC DIRECTION

Core Values

- Transparency & Accountability
- Hardworking
- Integrity
- Inclusiveness & Teamwork
- Responsiveness
- Innovativeness



STRATEGIC DIRECTION

Municipality Development Priority Projects

Capital Investment Plan -

Projects/Programmes- Resource Framework



INSTITUTION FRAMEWORK

Proposed Organogram

- Creation of the municipality organogram
- Creation of directorate

Capacity building through;

- Staff recruitment & training
- Availability of office space and equipment
- Creation of scheme of services and operating standard procedure



INSTITUTION FRAMEWORK

Functions of the following

- Governor
- County executive committee member
- Municipal Board
- Municipal Board Chairperson
- Committees of the Board of the Municipality
- Municipal manager
- Community participation and community structures



MONITORING AND EVALUATION

- Establish a Monitoring Committee whose work will be to monitor projects monthly while the Municipal Board will carry out supervision of the overall plan's implementation and review quarterly reports.
- Be subjected to two internal Annual Evaluations; Mid-Term and End Term Evaluation.
- Data Collection, Analysis and Reporting
- Information Sharing
- Municipality Monitoring and Evaluation System (MIMES)



THANK YOU

